

UAS Geographical Zones
Stakeholder Consultation
2022



Stakeholder Consultation is an integral part of the policy-making process in the IAA Safety Regulation Directorate. Consultation enables the Irish Aviation Authority (IAA) to be more open and its policies more effective by inviting and taking note of the views of relevant industries and other involved organisations and the public. The IAA consults on matters that include changes to legislation, the issue of new policy documents and the issue of guidance material.

1. Introduction

- 1.1. European Commission's Regulation (EU) 2019/947 sets out detailed provisions¹ for the establishment of UAS Geographical Zones. A UAS Geographical Zone is a portion of airspace established by the competent authority (*the IAA*) that facilitates, restricts, or excludes UAS operations in order to address risks pertaining to safety, privacy, protection of personal data, security or the environment, arising from UAS operations.
- 1.2. Current UAS Geographical Zones within the State are outlined in U-Notice 004 – UAS Geographical Zones².
- 1.3. The IAA, as the statutory body responsible for airspace design within Irish airspace, carried out a review of UAS Geographical Zones within the State in April 2021, seeking to ensure better access to airspace for UAS operators. The review focused on the Dublin Control Zone (controlled airspace).
- 1.4. This new review extends the principals applied to the Dublin Control Zone in 2021, and the lessons learnt over the past 18 months, to all Control Zones and other areas in the State. Additionally, the current process for access requests is also under review.
- 1.5. The purpose of this Notice is to inform all airspace users and interested parties of this review, and to invite and welcome submissions for consideration.
- 1.6. The consultation will be carried out during the period from the 21st October to the 18th November 2022 and submissions are invited from airspace users, UAS operators, remote pilots, manned aircraft operators, pilots, aerodrome operators, air navigation service providers, and other interested parties.

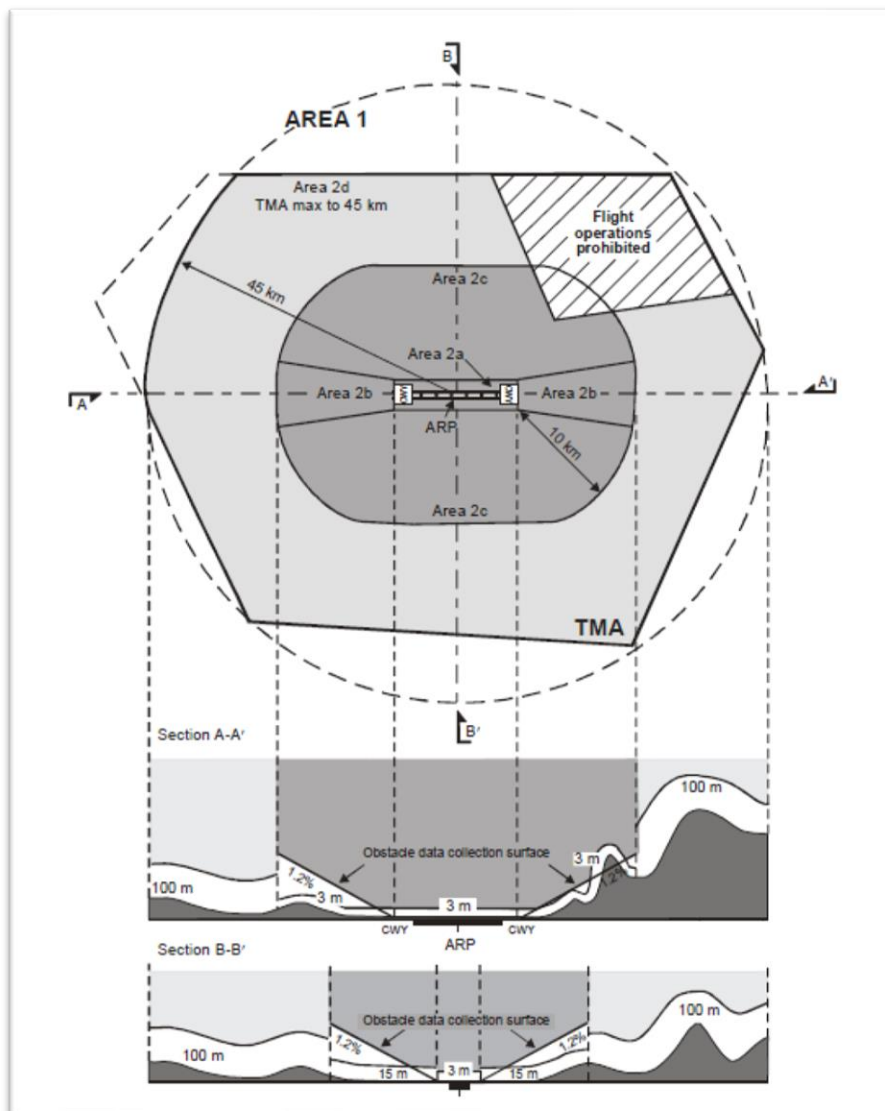
¹ <https://www.easa.europa.eu/en/document-library/easy-access-rules/easy-access-rules-unmanned-aircraft-systems-regulations-eu>

² <https://www.iaa.ie/docs/default-source/publications/aeronautical-notices/u---unmanned-aircraft/aeronautical-notice-u-04-direction-for-uas-geographical-zones-issue-18.pdf>

2. Protection of Manned Aircraft in the vicinity of Aerodromes

2.1. The current UAS Geographical Zone restrictions around aerodromes are established for the safety of manned aircraft. To balance the protection of manned aircraft and ensuring reasonable access for UAS operations we propose to apply the principals used in the vicinity of the Dublin Control Zone to all control zones in the State. See Annex B for proposed UAS Geographical Zones' Details, Annex C for UAS Geographical Zones' charts.

2.2. The basis for the UAS Geographical Zones height restrictions in the control zones are Terrain and Obstacle Data capture surfaces, as defined in ICAO Annex 15 and the EuroControl Terrain and Obstacle Data Manual³. Any obstacle not captured by these surfaces can be considered sufficiently separated from any IFP at an aerodrome.



³ <https://www.eurocontrol.int/publication/eurocontrol-terrain-and-obstacle-data-manual>

3. Access Requests

3.1. The UAS Flight in Controlled Airspace Application Form (UF101)⁴ is used to request access to restricted UAS Geographical Zones and is limited to holders of an Operational Authorisation in the Specific Category.

3.2. The purpose of the limitation to holders of an Operational Authorisation in the Specific Category is to ensure a level of competence when operating close to airports. We invite alternative proposals (e.g. remote pilot qualification) to further facilitate access while maintaining an equivalent level of safety.


3.3. An updated UF101 (Annex A) forms part of the consultation and comments are invited on it.

4. **Consultation Process.** We are inviting comments by close of business on the 18th November 2022. If you wish to comment, please complete the online form: [On Line Form for comments](#)⁵

⁴ <https://www.iaa.ie/docs/default-source/publications/forms/unmanned-aircraft-application-forms/uas-flight-in-controlled-airspace-application-form--v-9.pdf>

⁵ <https://forms.office.com/Pages/ResponsePage.aspx?id=DQSIKWdsW0yxEjaiBLZtrQAAAAAAAAAAAAAAMAAAIpZfBUMkFHOFRKREYyQVJTSEFaQil5QilJQIq2Ny4u>

ANNEX A – Access Request Form

	Form No. U.F.101 Version No. 11 Issue Date xx/xx/2021 Page 1 of 3	Application for UAS Geographical Zone Access Request
---	--	--

This Form is for the use of UAS Operators when applying to the relevant UAS Geographical Zone Authority to conduct UAS Operations within a Prohibited UAS Geographical Zone or outside of the limitation of a Restricted UAS Geographical Zone.

Application Form - UAS Geographical Zone Access Request	
Operator Name	
MySRS Registration No. (16 digit)	
Open Category Sub-Category (A1, A3, or A3) / Specific Assurance and Integrity Level (SAIL) / Pre-Defined Risk Assessment	
Operational Authorisation / LUC No. (Specific Category only)	
UAS Model(s)	
UAS Serial No(s)	
Remote Pilot(s) Name(s)	
Mobile Phone Numbers, Primary	
Mobile Phone Numbers, Alternate	
UAS Geographical Zone ID	
UAS Geographical Zone Name	
Latitude & Longitude (Deg, Min, & Sec; WGS-64)	
Radius of Operation (m)	
Description of the Area (townland, landmark, etc.)	
Maximum Altitude (AMSL)	
Maximum Height Above Ground Level (AGL)	
VHF Capability, Receiver only (Y/N)	
E-Identification (Y/N)	
Proposed Date(s) & Time(s) (Local)	
Duration (HH:MM)	

Caution: Access to UAS Geographical Zones established for the protection of manned aviation shall require an operational authorisation. VLOS operations only.

Map of Location, Area of Operation Aeronautical Chart, etc. (Insert Below)

Copy & Paste Here

Zone Authority _____

Signature _____ Date

Additional Zone Authority Requirements

ANNEX B - UAS Geographical Zones Details

UAS NAME	LINE LOCATION	UAS ID	PT AAS	GENIE AIRSPACE	DATA CONTROL (UAS)	LATITUDE	LONGITUDE	LINE TYPE	MINIMUM HGT	MAX	TOP ANGLE (°)	MIN UAS HEIGHT (PT AAS)	PERIOD OF VALIDITY	CONDITION	AISC CLASS	REMARKS	Zone Authority	Zone Authority Contact Details
Comney Centre	Sandford Road, Bally, Dublin	E1121	N/A	51 32 24.8000N	006 23 54.0000W			Circle	300 Surface		2000		0 Permanent	UAS Prohibited	Class C	Access may be requested through the zone authority for Open & Specific Category operations.	Department of Defence	uas@defence.gov.ie
Regal Hospital	Military Road, Dublin 8	E1123	N/A	53 20 36.8000N	006 30 07.8000W			Circle	800 Surface		5000		0 Permanent	UAS Prohibited	Class C	Access may be requested through the zone authority for Specific Category operations.	Department of Defence	uas@defence.gov.ie
Tallaght University Hospital	Tallaght, Dublin 24	E1124	N/A	53 17 35.5300N	006 24 02.0000W			Circle	800 Surface		5000		0 Permanent	UAS Prohibited	Class C	Access may be requested through the zone authority for Specific Category operations.	IAA ANSP	uas@iaa.ie
Coastguard Aerodrome	Baldonnel, Dublin 22	E1127	N/A	53 18 30.7700N	006 27 29.4611W			Circle	3000 Surface		5000		0 Permanent	UAS Prohibited	Class C	Access may be requested through the zone authority for Specific Category operations.	Department of Defence	uas@defence.gov.ie
Neascuille Aerodrome	Aerodrome Traffic Zone, Newcastle, County Wicklow	E1122	N/A	53 04 21.0000N	006 28 21.0000W			Circle	2778 Surface		1000		0 Permanent	UAS Prohibited	Class C	Access may be requested through the zone authority for Specific Category operations.	Newcastle Aerodrome	uas@neascuille.ie
Castlerea Aerodrome	Johns, County Wicklow	E1127	N/A	53 20 26.0000N	007 26 43.0000W			Circle	2704 Surface		1000		0 Permanent	UAS Prohibited	Class C	Access may be requested through the zone authority for Open & Specific Category operations.	Department of Defence	uas@defence.gov.ie
Castleknock Aerodrome	Baldonnel, Dublin 2	E1123	N/A	53 19 48.5800N	006 28 23.0000W			Circle	3713 Surface		750		0 Permanent	UAS Prohibited	Class C	Access may be requested through the zone authority for Open & Specific Category operations.	Department of Defence	uas@defence.gov.ie
Beaumont Hospital	Beaumont Road, Dublin 9	E1120	N/A	53 23 34.4000N	006 12 23.8000W			Circle	800 Surface		5000		0 Permanent	UAS Prohibited	Class C	Access may be requested through the zone authority for Specific Category operations.	IAA ANSP	uas@iaa.ie
Wexham Airport	Lansing, County Kildare	E1121	N/A	53 21 06.0000N	006 29 28.0000W			Circle	3000 Surface		5000		0 Permanent	UAS Prohibited	Class C	Access may be requested through the zone authority for Specific Category operations.	Wexham ATC	uas@wexham.ie
Dublin Control Zone (CTR) - Terrain 1	Wood Quay, Dublin	E1124	N/A	53 26 22.1211N	006 30 22.3017W			Circle	650 Surface		3000		0 Permanent	UAS Prohibited	Class C	Access may be requested through the zone authority for Specific Category operations.	Dublin ATC	uas@dublin.ie
Dublin Control Zone (CTR) - Terrain 2	Claghain, Dublin	E1125	N/A	53 24 46.2276N	006 30 21.3693W			Circle	650 Surface		3000		0 Permanent	UAS Prohibited	Class C	Access may be requested through the zone authority for Specific Category operations.	Dublin ATC	uas@dublin.ie
Dublin Control Zone (CTR) - Terrain 3	Dunshink, Dublin	E1126	N/A	53 23 25.9661N	006 30 26.2669W			Circle	400 Surface		3000		0 Permanent	UAS Prohibited	Class C	Access may be requested through the zone authority for Specific Category operations.	Dublin ATC	uas@dublin.ie
Dublin Control Zone (CTR) - Red Zone	County Dublin	E1127	N/A	53 25 44.2400N	006 25 56.7039W			Circle	3000 Surface		5000		0 Permanent	UAS Prohibited	Class C	Access may be requested through the zone authority for Specific Category operations.	Dublin ATC	uas@dublin.ie
Dublin Control Zone (CTR) - Amber Zone	County Dublin	E1128	N/A	53 25 44.2400N	006 25 56.7039W			Circle	12100 Surface		3000		0 Permanent	UAS Height Constraint	Class C	The greater of 20M AGL or the height of the tallest obstacle within 50M. The maximum height may be increased up to 15M above the height of the obstacle at the request of the entity responsible for the obstacle. Excluding E1120, E1121, E1126, E1128, E1129, E1130, E1131, E1132, E1133, E1134, E1135, E1136, E1137, E1138, E1139, E1140, E1141, E1142, E1143, E1144, E1145, E1146, E1147, E1148, E1149, E1150, E1151, E1152, E1153, E1154, E1155, E1156, E1157, E1158, E1159, E1160, E1161, E1162, E1163, E1164, E1165, E1166, E1167, E1168, E1169, E1170, E1171, E1172, E1173, E1174, E1175, E1176, E1177, E1178, E1179, E1180, E1181, E1182, E1183, E1184, E1185, E1186, E1187, E1188, E1189, E1190, E1191, E1192, E1193, E1194, E1195, E1196, E1197, E1198, E1199, E1200, E1201, E1202, E1203, E1204, E1205, E1206, E1207, E1208, E1209, E1210, E1211, E1212, E1213, E1214, E1215, E1216, E1217, E1218, E1219, E1220, E1221, E1222, E1223, E1224, E1225, E1226, E1227, E1228, E1229, E1230, E1231, E1232, E1233, E1234, E1235, E1236, E1237, E1238, E1239, E1240, E1241, E1242, E1243, E1244, E1245, E1246, E1247, E1248, E1249, E1250, E1251, E1252, E1253, E1254, E1255, E1256, E1257, E1258, E1259, E1260, E1261, E1262, E1263, E1264, E1265, E1266, E1267, E1268, E1269, E1270, E1271, E1272, E1273, E1274, E1275, E1276, E1277, E1278, E1279, E1280, E1281, E1282, E1283, E1284, E1285, E1286, E1287, E1288, E1289, E1290, E1291, E1292, E1293, E1294, E1295, E1296, E1297, E1298, E1299, E1300, E1301, E1302, E1303, E1304, E1305, E1306, E1307, E1308, E1309, E1310, E1311, E1312, E1313, E1314, E1315, E1316, E1317, E1318, E1319, E1320, E1321, E1322, E1323, E1324, E1325, E1326, E1327, E1328, E1329, E1330, E1331, E1332, E1333, E1334, E1335, E1336, E1337, E1338, E1339, E1340, E1341, E1342, E1343, E1344, E1345, E1346, E1347, E1348, E1349, E1350, E1351, E1352, E1353, E1354, E1355, E1356, E1357, E1358, E1359, E1360, E1361, E1362, E1363, E1364, E1365, E1366, E1367, E1368, E1369, E1370, E1371, E1372, E1373, E1374, E1375, E1376, E1377, E1378, E1379, E1380, E1381, E1382, E1383, E1384, E1385, E1386, E1387, E1388, E1389, E1390, E1391, E1392, E1393, E1394, E1395, E1396, E1397, E1398, E1399, E1400, E1401, E1402, E1403, E1404, E1405, E1406, E1407, E1408, E1409, E1410, E1411, E1412, E1413, E1414, E1415, E1416, E1417, E1418, E1419, E1420, E1421, E1422, E1423, E1424, E1425, E1426, E1427, E1428, E1429, E1430, E1431, E1432, E1433, E1434, E1435, E1436, E1437, E1438, E1439, E1440, E1441, E1442, E1443, E1444, E1445, E1446, E1447, E1448, E1449, E1450, E1451, E1452, E1453, E1454, E1455, E1456, E1457, E1458, E1459, E1460, E1461, E1462, E1463, E1464, E1465, E1466, E1467, E1468, E1469, E1470, E1471, E1472, E1473, E1474, E1475, E1476, E1477, E1478, E1479, E1480, E1481, E1482, E1483, E1484, E1485, E1486, E1487, E1488, E1489, E1490, E1491, E1492, E1493, E1494, E1495, E1496, E1497, E1498, E1499, E1500, E1501, E1502, E1503, E1504, E1505, E1506, E1507, E1508, E1509, E1510, E1511, E1512, E1513, E1514, E1515, E1516, E1517, E1518, E1519, E1520, E1521, E1522, E1523, E1524, E1525, E1526, E1527, E1528, E1529, E1530, E1531, E1532, E1533, E1534, E1535, E1536, E1537, E1538, E1539, E1540, E1541, E1542, E1543, E1544, E1545, E1546, E1547, E1548, E1549, E1550, E1551, E1552, E1553, E1554, E1555, E1556, E1557, E1558, E1559, E1560, E1561, E1562, E1563, E1564, E1565, E1566, E1567, E1568, E1569, E1570, E1571, E1572, E1573, E1574, E1575, E1576, E1577, E1578, E1579, E1580, E1581, E1582, E1583, E1584, E1585, E1586, E1587, E1588, E1589, E1590, E1591, E1592, E1593, E1594, E1595, E1596, E1597, E1598, E1599, E1600, E1601, E1602, E1603, E1604, E1605, E1606, E1607, E1608, E1609, E1610, E1611, E1612, E1613, E1614, E1615, E1616, E1617, E1618, E1619, E1620, E1621, E1622, E1623, E1624, E1625, E1626, E1627, E1628, E1629, E1630, E1631, E1632, E1633, E1634, E1635, E1636, E1637, E1638, E1639, E1640, E1641, E1642, E1643, E1644, E1645, E1646, E1647, E1648, E1649, E1650, E1651, E1652, E1653, E1654, E1655, E1656, E1657, E1658, E1659, E1660, E1661, E1662, E1663, E1664, E1665, E1666, E1667, E1668, E1669, E1670, E1671, E1672, E1673, E1674, E1675, E1676, E1677, E1678, E1679, E1680, E1681, E1682, E1683, E1684, E1685, E1686, E1687, E1688, E1689, E1690, E1691, E1692, E1693, E1694, E1695, E1696, E1697, E1698, E1699, E1700, E1701, E1702, E1703, E1704, E1705, E1706, E1707, E1708, E1709, E1710, E1711, E1712, E1713, E1714, E1715, E1716, E1717, E1718, E1719, E1720, E1721, E1722, E1723, E1724, E1725, E1726, E1727, E1728, E1729, E1730, E1731, E1732, E1733, E1734, E1735, E1736, E1737, E1738, E1739, E1740, E1741, E1742, E1743, E1744, E1745, E1746, E1747, E1748, E1749, E1750, E1751, E1752, E1753, E1754, E1755, E1756, E1757, E1758, E1759, E1760, E1761, E1762, E1763, E1764, E1765, E1766, E1767, E1768, E1769, E1770, E1771, E1772, E1773, E1774, E1775, E1776, E1777, E1778, E1779, E1780, E1781, E1782, E1783, E1784, E1785, E1786, E1787, E1788, E1789, E1790, E1791, E1792, E1793, E1794, E1795, E1796, E1797, E1798, E1799, E1800, E1801, E1802, E1803, E1804, E1805, E1806, E1807, E1808, E1809, E1810, E1811, E1812, E1813, E1814, E1815, E1816, E1817, E1818, E1819, E1820, E1821, E1822, E1823, E1824, E1825, E1826, E1827, E1828, E1829, E1830, E1831, E1832, E1833, E1834, E1835, E1836, E1837, E1838, E1839, E1840, E1841, E1842, E1843, E1844, E1845, E1846, E1847, E1848, E1849, E1850, E1851, E1852, E1853, E1854, E1855, E1856, E1857, E1858, E1859, E1860, E1861, E1862, E1863, E1864, E1865, E1866, E1867, E1868, E1869, E1870, E1871, E1872, E1873, E1874, E1875, E1876, E1877, E1878, E1879, E1880, E1881, E1882, E1883, E1884, E1885, E1886, E1887, E1888, E1889, E1890, E1891, E1892, E1893, E1894, E1895, E1896, E1897, E1898, E1899, E1900, E1901, E1902, E1903, E1904, E1905, E1906, E1907, E1908, E1909, E1910, E1911, E1912, E1913, E1914, E1915, E1916, E1917, E1918, E1919, E1920, E1921, E1922, E1923, E1924, E1925, E1926, E1927, E1928, E1929, E1930, E1931, E1932, E1933, E1934, E1935, E1936, E1937, E1938, E1939, E1940, E1941, E1942, E1943, E1944, E1945, E1946, E1947, E1948, E1949, E1950, E1951, E1952, E1953, E1954, E1955, E1956, E1957, E1958, E1959, E1960, E1961, E1962, E1963, E1964, E1965, E1966, E1967, E1968, E1969, E1970, E1971, E1972, E1973, E1974, E1975, E1976, E1977, E1978, E1979, E1980, E1981, E1982, E1983, E1984, E1985, E1986, E1987, E1988, E1989, E1990, E1991, E1992, E1993, E1994, E1995, E1996, E1997, E1998, E1999, E2000, E2001, E2002, E2003, E2004, E2005, E2006, E2007, E2008, E2009, E2010, E2011, E2012, E2013, E2014, E2015, E2016, E2017, E2018, E2019, E2020, E2021, E2022, E2023, E2024, E2025, E2026, E2027, E2028, E2029, E2030, E2031, E2032, E2033, E2034, E2035, E2036, E2037, E2038, E2039, E2040, E2041, E2042, E2043, E2044, E2045, E2046, E2047, E2048, E2049, E2050, E2051, E2052, E2053, E2054, E2055, E2056, E2057, E2058, E2059, E2060, E2061, E2062, E2063, E2064, E2065, E2066, E2067, E2068, E2069, E2070, E2071, E2072, E2073, E2074, E2075, E2076, E2077, E2078, E2079, E2080, E2081, E2082, E2083, E2084, E2085, E2086, E2087, E2088, E2089, E2090, E2091, E2092, E2093, E2094, E2095, E2096, E2097, E2098, E2099, E2100, E2101, E2102, E2103, E2104, E2105, E2106, E2107, E2108, E2109, E2110, E2111, E2112, E2113, E2114, E2115, E2116, E2117, E2118, E2119, E2120, E2121, E2122, E2123, E2124, E2125, E2126, E2127, E2128, E2129, E2130, E2131, E2132, E2133, E2134, E2135, E2136, E2137, E2138, E2139, E2140, E2141, E2142, E2143, E2144, E2145, E2146, E2147, E2148, E2149, E2150, E2151, E2152, E2153, E2154, E2155, E2156, E2157, E2158, E2159, E2160, E2161, E2162, E2163, E2164, E2165, E2166, E2167, E2168, E2169, E2170, E2171, E2172, E2173, E2174, E2175, E2176, E2177, E2178, E2179, E2180, E2181, E2182, E2183, E2184, E2185, E2186, E2187, E2188, E2189, E2190, E2191, E2192, E2193, E2194, E2195, E2196, E2197, E2198, E2199, E2200, E2201, E2202, E2203, E2204, E2205, E2206, E2207, E2208, E2209, E2210, E2211, E2212, E2213, E2214, E2215, E2216, E2217, E2218, E2219, E2220, E2221, E2222, E2223, E2224, E2225, E2226, E2227, E2228, E2229, E2230, E2231, E2232, E2233, E2234, E2235, E2236, E2237, E2238, E2239, E2240, E2241, E2242, E2243, E2244, E2245, E2246, E2247, E2248, E2249, E2250, E2251, E2252, E2253, E2254, E2255, E2256, E2257, E2258, E2259, E2260, E2261, E2262, E2263, E2264, E2265, E2266, E2267, E2268, E2269, E2270, E2271, E2272, E2273, E2274, E2275, E2276, E2277, E2278, E2279, E2280, E2281, E2282, E2283, E2284, E2285, E2286, E2287, E2288, E2289, E2290, E2291, E2292, E2293, E2294, E2295, E2296, E2297, E2298, E2299, E2300, E2301, E2302, E2303, E2304, E2305, E2306, E2307, E2308, E2309, E2310, E2311, E2312, E2313, E2314, E2315, E2316, E2317, E2318, E2319, E2320, E2321, E2322, E2323, E2324, E2325, E2326, E2327, E2328, E2329, E2330, E2331, E2332, E2333, E2334, E2335, E2336, E2337, E2338, E2339, E2340, E2341, E2342, E2343, E2344, E2345, E2346, E2347, E2348, E2349, E2350, E2351, E2352, E2353, E2354, E2355, E2356, E2357, E2358, E2359, E2360, E2361, E2362, E2363, E2364, E2365, E2366, E2367, E2368, E2369, E2370, E2371, E2372, E2373, E2374, E2375, E2376, E2377, E2378, E2379, E2380, E2381, E2382, E2383, E2384, E2385, E2386, E2387, E2388, E2389, E2390, E2391, E2392, E2393, E2394, E2395, E2396, E2397, E2398, E2399, E2400, E2401, E2402, E2403, E2404, E2405, E2406, E2407, E2408, E2409, E2410, E2411, E2412, E2413, E2414, E2415, E2416, E2417, E2418, E2419, E2420, E2421, E2422, E2423, E2424, E2425, E2426, E2427, E2428, E2429, E2430, E2431, E2432, E2433, E2434, E2435, E2436, E2437, E2438, E2439, E2440, E2441, E2442, E2443, E2444, E2445, E2446, E2447, E2448, E2449, E2450, E2451, E2452, E2453, E2454, E2455, E2456, E2457, E2458, E2459, E2460, E2461, E2462, E2463, E2464, E2465, E2466, E2467, E2468, E2469, E2470, E2471, E2472, E2473, E2474, E2475, E2476, E2477, E2478, E2479, E2480, E2481, E2482, E2483, E2484, E2485, E2486, E2487, E2488, E2489, E2490, E2491, E2492, E2493, E2494, E2495, E2496, E2497, E2498, E2499, E2500, E2501, E2502, E2503, E2504, E2505, E2506, E2507, E2508, E2509, E2510, E2511, E2512, E2513, E2514, E2515, E2516, E2517, E2518, E2519, E2520, E2521, E2522, E2523, E2524, E2525, E2526, E2527, E2528, E2529, E2530, E2531, E2532, E2533, E2534, E2535, E2536, E2537, E2538, E2539, E2540, E2541, E2542, E2543, E2544, E2545, E2546, E2547, E2548, E2549, E2550, E2551, E2552, E2553, E2554, E2555, E2556, E2557, E2558, E2559, E2560, E2561, E2562, E2563, E2564, E2565, E2566, E2567, E2568, E2569, E2570, E2571, E2572, E2573, E2574, E2575, E2576, E2577, E2578, E2579, E2580, E2581, E2582, E2583, E2584, E2585, E2586, E2587, E2588, E2589, E2590, E2591, E2592, E2593, E2594, E2595, E2596, E2597, E2598, E2599, E2600, E2601, E2602, E2603, E2604, E2605, E2606, E2607, E2608, E2609, E2610, E2611, E2612, E2613, E2614, E2615, E2616, E2617, E2618, E2619, E2620, E2621, E2622, E2623, E2624, E2625, E2626, E2627, E2628, E2629, E2630, E2631, E2632, E2633, E2634, E2635, E2636, E2637, E2638, E26		

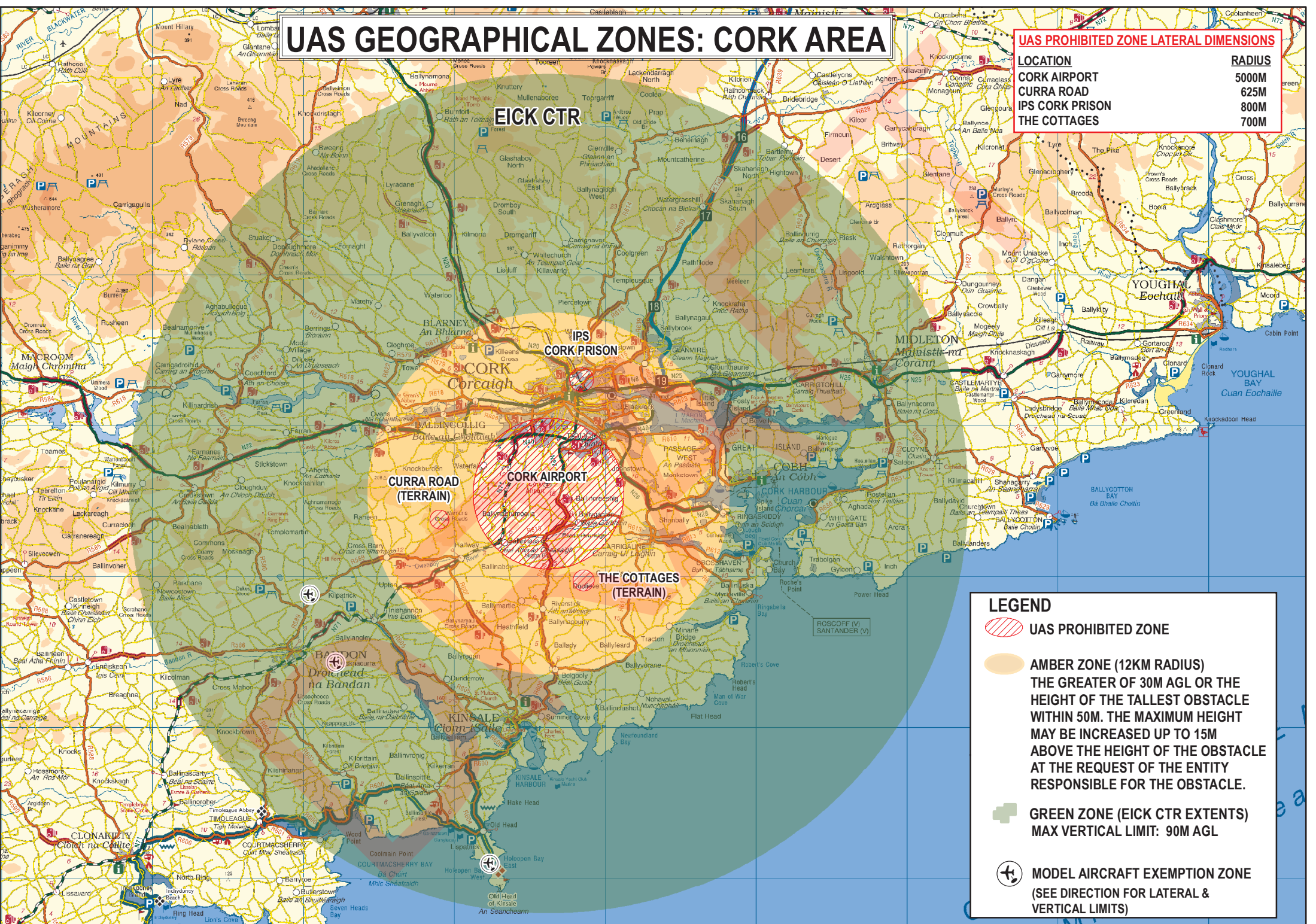
Shannon Control Zone CTR - Terrain 7	Kilulla, County Clare	E1UB4	N/A	52 44 41.8400N	008 52 59.3200W	Circle	2400 Surface	5000	0 Permanent	UAS Prohibited	Class C	Access may be requested through the same authority for Specific Category operations.	Shannon ATC	uas@shannon.ie
Shannon Control Zone CTR - Terrain 8	Lisheen, County Clare	E1UB5	N/A	52 45 41.5000N	009 02 54.6600W	Circle	800 Surface	5000	0 Permanent	UAS Prohibited	Class C	Access may be requested through the same authority for Specific Category operations.	Shannon ATC	uas@shannon.ie
Sligo Control Zone (CTR) - Red Zone	County Sligo	E1UB7	N/A	54 16 48.7883N	008 35 57.1479W	Circle	5000 Surface	5000	0 Permanent	UAS Prohibited	Class C	Access may be requested through the same authority for Specific Category operations.	Sligo ATC	ufm@sligoairport.com
Sligo Control Zone (CTR) - Amber Zone	County Sligo	E1UB8	N/A	54 16 48.7883N	008 35 57.1479W	Circle	12000 Surface	3000	50 Permanent	UAS Height Constraint	Class C	The greater of 120M AGL or the height of the tallest obstacle within 500M. The maximum height may be increased up to 220 above the height of the obstacle at the request of the entity responsible for the obstacle. Excluding E1UB7. Access above the height restrictions may be requested through the same authority for Specific Category operations.	Sligo ATC	ufm@sligoairport.com
Waterford Control Zone (CTR) Red Zone	County Waterford	E1UB9	N/A	52 11 11.9100N	007 07 13.0679W	Circle	3000 Surface	5000	0 Permanent	UAS Prohibited	Class C	Access may be requested through the same authority for Specific Category operations.	Waterford ATC	uas@waterfordairport.net
Waterford Control Zone (CTR) Amber Zone	County Waterford	E1UB0	N/A	52 11 11.9100N	007 07 13.0679W	Circle	10000 Surface	5000	98 Permanent	UAS Height Constraint	Class C	The greater of 20M AGL or the height of the tallest obstacle within 500M. The maximum height may be increased up to 15M above the height of the obstacle at the request of the entity responsible for the obstacle. Excluding E1UB9. E1UB1, E1UB2, E1UB3, E1UB4, E1UB5. Access above the height restrictions may be requested through the same authority for Specific Category operations.	Waterford ATC	uas@waterfordairport.net
Waterford Control Zone CTR - Terrain 1	Ballyvaughan, County Waterford	E1UB1	N/A	52 11 04.2500N	007 10 45.7600W	Circle	3800 Surface	5000	0 Permanent	UAS Prohibited	Class C	Access may be requested through the same authority for Specific Category operations.	Waterford ATC	uas@waterfordairport.net
Waterford Control Zone CTR - Terrain 2	Ballyvaughan, County Waterford	E1UB2	N/A	52 11 51.0500N	007 09 31.7200W	Circle	800 Surface	5000	0 Permanent	UAS Prohibited	Class C	Access may be requested through the same authority for Specific Category operations.	Waterford ATC	uas@waterfordairport.net
Waterford Control Zone CTR - Terrain 3	Fallhogg, County Waterford	E1UB3	N/A	52 15 56.5700N	007 00 24.8800W	Circle	800 Surface	5000	0 Permanent	UAS Prohibited	Class C	Access may be requested through the same authority for Specific Category operations.	Waterford ATC	uas@waterfordairport.net
Waterford Control Zone CTR - Terrain 4	Kilsoop Upper, County Waterford	E1UB4	N/A	52 12 58.9000N	007 00 59.3200W	Circle	1700 Surface	5000	0 Permanent	UAS Prohibited	Class C	Access may be requested through the same authority for Specific Category operations.	Waterford ATC	uas@waterfordairport.net
Waterford Control Zone CTR - Terrain 5	Lepinstown, County Waterford	E1UB5	N/A	52 10 04.2500N	007 01 30.3700W	Circle	3500 Surface	5000	0 Permanent	UAS Prohibited	Class C	Access may be requested through the same authority for Specific Category operations.	Waterford ATC	uas@waterfordairport.net
Sligo Model Flying Club 1	Aronagh Reg, Coleraine, County Sligo	E1UB6	N/A	54 10 12.0000N	008 32 07.0000W	Circle	500 Surface	400	400 Permanent	Exemption Zone	Class C	Model Aircraft are exempt from the restrictions of the UAS Geographical Zone within which the exemption zone resides.	Sligo ATC	ufm@sligoairport.com

DRAFT

UGZ NAME	UGZ DESCRIPTION	UGZ ID	MAX UAS HEIGHT (FT AGL)	PERIOD OF VALIDITY	CONDITION	LEGISLATION	REMARKS	Zone Authority	Zone Authority Contact Details
EI D1	Danger Area 1, Gormanston, Meath	EI U1	0	Permanent	UAS Prohibited	Prohibited & Danger Area Amendment June 10th 2004	Access may be requested through the zone authority for Open & Specific Category operations.	Department of Defence	airspaceandobstacles@defenceforces.ie
EI D5	Danger Area 5, Glen of Imaal, Wicklow	EI U5	0	Permanent	UAS Prohibited	Prohibited & Danger Area Amendment June 10th 2004	Access may be requested through the zone authority for Open & Specific Category operations.	Department of Defence	airspaceandobstacles@defenceforces.ie
EI D6	Danger Area 6, Kilworth, Cork	EI U6	0	Permanent	UAS Prohibited	Prohibited & Danger Area Amendment June 10th 2004	Access may be requested through the zone authority for Open & Specific Category operations.	Department of Defence	airspaceandobstacles@defenceforces.ie
EI D13	Sea/Coastal Area SSW of Cork	EI U13	0	Permanent	UAS Prohibited	Prohibited & Danger Area Amendment June 10th 2004	Access may be requested through the zone authority for Open & Specific Category operations. Excludes High Seas (Waters greater than 12nm from coastline)	Department of Defence	airspaceandobstacles@defenceforces.ie
EI D14	Sea Area SW of Kerry	EI U14	0	Permanent	UAS Prohibited	Prohibited & Danger Area Amendment June 10th 2004	Access may be requested through the zone authority for Open & Specific Category operations. Excludes High Seas (Waters greater than 12nm from coastline).	Department of Defence	airspaceandobstacles@defenceforces.ie
EI P8	Prohibited Area 8, Portlaoise, Laoise	EI U8	0	Permanent	UAS Prohibited	Prohibited & Danger Area Amendment June 10th 2004	Access may be requested through the zone authority for Open & Specific Category operations.	Department of Defence	airspaceandobstacles@defenceforces.ie
EI P9	Prohibited Area 9, Limerick Prison	EI U9	0	Permanent	UAS Prohibited	Prohibited & Danger Area Amendment June 10th 2004	Access may be requested through the zone authority for Open & Specific Category operations.	Department of Defence	airspaceandobstacles@defenceforces.ie
EI P10	Prohibited Area 10, Curragh Military Camp, Kildare	EI U10	0	Permanent	UAS Prohibited	Prohibited & Danger Area Amendment June 10th 2004	Access may be requested through the zone authority for Open & Specific Category operations.	Department of Defence	airspaceandobstacles@defenceforces.ie
EI P11	Prohibited Area 11, Phoenix Park, Dublin	EI U11	0	Permanent	UAS Prohibited	Prohibited & Danger Area Amendment June 10th 2004	Access may be requested through the zone authority for Open & Specific Category operations.	Department of Defence	airspaceandobstacles@defenceforces.ie
EI P18	Prohibited Area 18, Mountjoy Prison, Dublin	EI U18	0	Permanent	UAS Prohibited	Prohibited & Danger Area Amendment June 10th 2004	Access may be requested through the zone authority for Open & Specific Category operations.	Department of Defence	airspaceandobstacles@defenceforces.ie
EI R15	Restricted Area 15	EI U15	0	Permanent	UAS Height Constraint	S.I. 806 of 2007 - Designated Areas Order	Access may be requested through the zone authority for Specific Category operations. UAS which has a mass of less than 25 kilograms, without fuel but including any articles or equipment installed in or attached to the aircraft and including cargo at the commencement of its flight, may be operated at a height above the surface of not more than 8 metres (25 ft) excluding EI U23, EI U4, EI U7, EI U21.	Department of Defence	airspaceandobstacles@defenceforces.ie
EI R16	Restricted Area 16 (B,C,D,E,F,G,H)	EI U16	0	Permanent	UAS Prohibited	S.I. 806 of 2007 - Designated Areas Order	Access may be requested through the zone authority for Specific Category operations.	Department of Defence	airspaceandobstacles@defenceforces.ie
EI R22	Restricted Area 22	EI U22	0	Permanent	UAS Prohibited	S.I. 806 of 2007 - Designated Areas Order	Access may be requested through the zone authority for Specific Category operations.	Department of Defence	airspaceandobstacles@defenceforces.ie
EI R23	Restricted Area 23	EI U23	0	Permanent	UAS Prohibited	S.I. 806 of 2007 - Designated Areas Order	Access may be requested through the zone authority for Specific Category operations.	Department of Defence	airspaceandobstacles@defenceforces.ie
Dublin Airport - Green Zone	County Dublin	EI U29	300	Permanent	UAS Height Constraint	Shannon FIR Airspace Amendment 08th December 2016	Excluding EI U2, EI U3, EI U4, EI U7, EI U11, EI U15, EI U18, EI U19, EI U20, EI U21, EI U24, EI U25, EI U26, EI U27, EI U28, EI U42, EI U 44, EI U48, EI U76. Access above the height restrictions may be requested through the zone authority for Specific Category operations.	Dublin ATC	suaairspace@iaa.ie
Donegal Control Zone (CTR) - Green Zone	County Donegal	EI U35	295	Permanent	UAS Height Constraint	Shannon FIR Airspace Amendment 08th December 2016	90m Excluding EI U69 & EI U70 . Access above the height restrictions may be requested through the zone authority for Specific Category operations.	Donegal ATC	sua@donegalairport.ie
Sligo Control Zone (CTR) - Green Zone	County Sligo	EI U36	295	Permanent	UAS Prohibited	Shannon FIR Airspace Amendment 08th December 2016	90m excluding EI U87 & EI U88. Access above the height restrictions may be requested through the zone authority for Specific Category operations.	Sligo ATC	safetymanager@sligoairport.com
Waterford Control Zone (CTR) - Green Zone	County Waterford	EI U65	295	Permanent	UAS Prohibited	Shannon FIR Airspace Amendment 08th December 2016	90m excluding EI U89, EI U90, EI U91, EI U92, EI U93, EI U94, EI U95 . Access above the height restrictions may be requested through the zone authority for Specific Category operations.	Waterford ATC	sua@waterfordairport.net
Cork Control Zone (CTR) - Green Zone	County Cork	EI U66	295	Permanent	UAS Height Constraint	Shannon FIR Airspace Amendment 08th December 2016	90m excluding EI U33, EI U45, EI U61, EI U67, EI U68. Access above the height restrictions may be requested through the zone authority for Specific Category operations.	Cork ATC	suaairspace@iaa.ie
Connaught Control Zone (CTR) - Green Zone	County Mayo	EI U71	295	Permanent	UAS Height Constraint	Shannon FIR Airspace Amendment 08th December 2016	90m Excluding EI U32 & EI U63 . Access above the height restrictions may be requested through the zone authority for Specific Category operations.	Ireland West ATC	michaelconnolly@irelandwestairport.com
Shannon Control Zone (CTR) - Green Zone	County	EI U86	295	Permanent	UAS Height Constraint	Shannon FIR Airspace Amendment 08th December 2016	90m excluding EI U31, EI U64, EI U78, EI U79, EI U80, EI U81, EI U82, EI U83, EI U84, EI U85. Access above the height restrictions may be requested through the zone authority for Specific Category operations.	Shannon ATC	suaairspace@iaa.ie

UAS GEOGRAPHICAL ZONES: CORK AREA

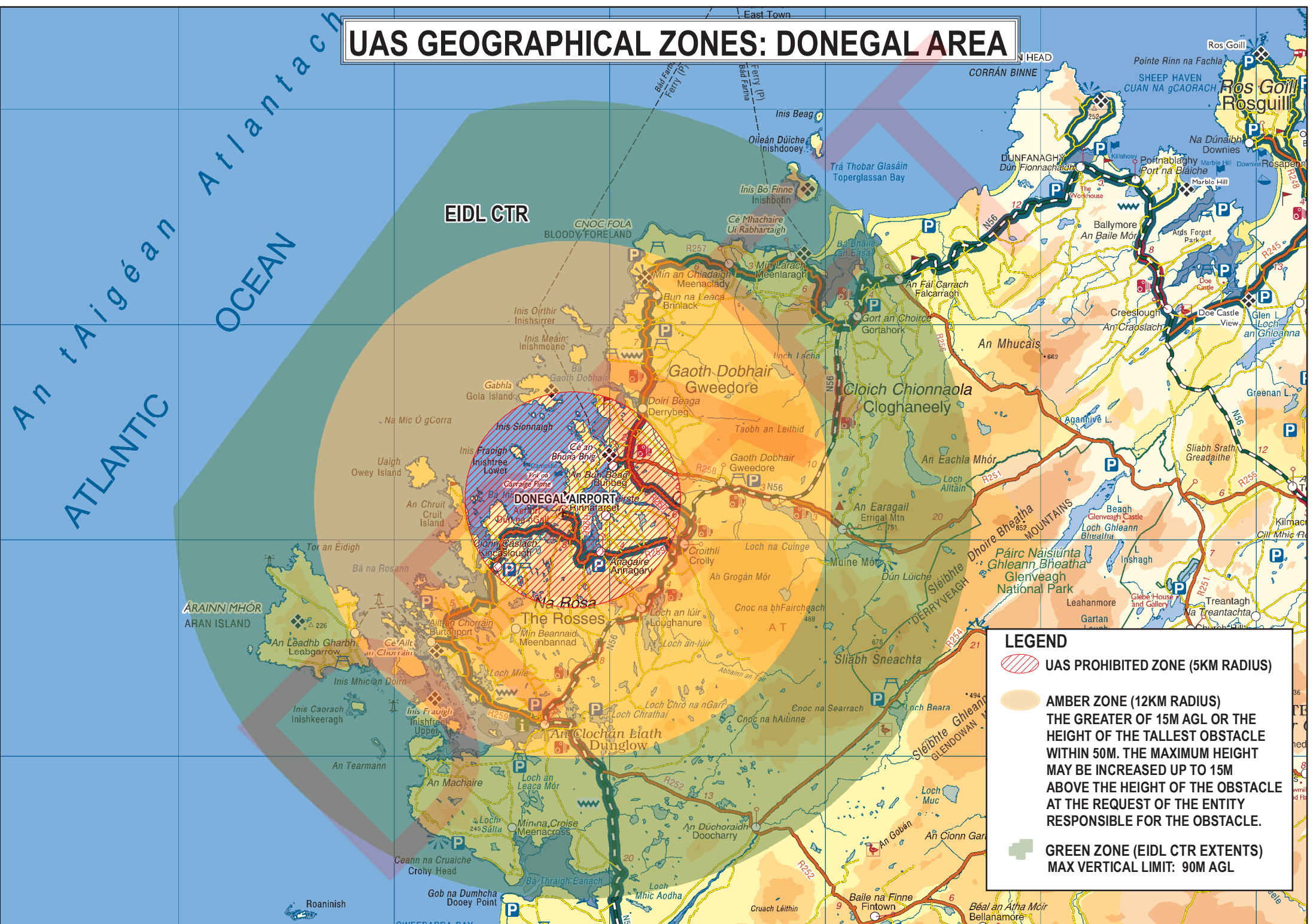
UAS PROHIBITED ZONE LATERAL DIMENSIONS	
LOCATION	RADIUS
CORK AIRPORT	5000M
CURRA ROAD	625M
IPS CORK PRISON	800M
THE COTTAGES	700M






LEGEND

- UAS PROHIBITED ZONE
- AMBER ZONE (12KM RADIUS)
THE GREATER OF 30M AGL OR THE HEIGHT OF THE TALLEST OBSTACLE WITHIN 50M. THE MAXIMUM HEIGHT MAY BE INCREASED UP TO 15M ABOVE THE HEIGHT OF THE OBSTACLE AT THE REQUEST OF THE ENTITY RESPONSIBLE FOR THE OBSTACLE.
- GREEN ZONE (EICK CTR EXTENTS)
MAX VERTICAL LIMIT: 90M AGL
- MODEL AIRCRAFT EXEMPTION ZONE
(SEE DIRECTION FOR LATERAL & VERTICAL LIMITS)

UAS GEOGRAPHICAL ZONES: DONEGAL AREA



LEGEND

-  **UAS PROHIBITED ZONE (5KM RADIUS)**
-  **AMBER ZONE (12KM RADIUS)**
THE GREATER OF 15M AGL OR THE HEIGHT OF THE TALLEST OBSTACLE WITHIN 50M. THE MAXIMUM HEIGHT MAY BE INCREASED UP TO 15M ABOVE THE HEIGHT OF THE OBSTACLE AT THE REQUEST OF THE ENTITY RESPONSIBLE FOR THE OBSTACLE.
-  **GREEN ZONE (EIDL CTR EXTENTS)**
MAX VERTICAL LIMIT: 90M AGL






UAS GEOGRAPHICAL ZONES: DUBLIN AREA

UAS PROHIBITED ZONE LATERAL DIMENSIONS

LOCATION	RADIUS
ARBOUR HILL PRISON	800M
BALLYBOUGHAL AIRFIELD	1000M
BEAUMONT HOSPITAL	800M
CASEMENT AERODROME	5000M
CATHAL BRUGHA BARRACKS	371M
CLOGHRAN	1500M
CLOVERHILL & WHEATFIELD PRISONS	800M
CURRENCY CENTRE	500M
DUBLIN AIRPORT	5000M
DUNSINK	400M
IPS BSD (IRISH PRISON SERVICE)	500M
PROHIBITED AREA 11 (PHOENIX PARK)	1852M
PROHIBITED AREA 18 (MOUNTJOY PRISON)	926M
ROYAL HOSPITAL KILMAINHAM	800M
TALLAGHT UNIVERSITY HOSPITAL	800M
WARD UPPER	650M
WESTON AIRPORT	3000M



LEGEND

-  UAS PROHIBITED ZONE
-  AMBER ZONE (12.1KM RADIUS)
THE GREATER OF 30M AGL OR THE HEIGHT OF THE TALLEST OBSTACLE WITHIN 50M. THE MAXIMUM HEIGHT MAY BE INCREASED UP TO 15M ABOVE THE HEIGHT OF THE OBSTACLE AT THE REQUEST OF THE ENTITY RESPONSIBLE FOR THE OBSTACLE.
-  GREEN ZONE (EIDW CTR EXTENTS)
MAX VERTICAL LIMIT: 90M AGL
-  EIR 15 (MILITARY RESTRICTED AREA)
MAX VERTICAL LIMIT: 8M AGL
-  MODEL AIRCRAFT EXEMPTION ZONE
(SEE DIRECTION FOR LATERAL & VERTICAL LIMITS)




Mapping based on Ordnance Survey Ireland by permission of the Government © Government of Ireland Permit Number 7109

UAS GEOGRAPHICAL ZONE: CONNAUGHT AREA

UAS PROHIBITED ZONE LATERAL DIMENSIONS

LOCATION	RADIUS
CONNAUGHT AIRPORT	5000M
IPS CASTLEREA PRISON	800M

LEGEND

-  UAS PROHIBITED ZONE
-  AMBER ZONE (12KM RADIUS)
THE GREATER OF 30M AGL OR THE HEIGHT OF THE TALLEST OBSTACLE WITHIN 50M. THE MAXIMUM HEIGHT MAY BE INCREASED UP TO 15M ABOVE THE HEIGHT OF THE OBSTACLE AT THE REQUEST OF THE ENTITY RESPONSIBLE FOR THE OBSTACLE.
-  GREEN ZONE (EIKN CTR EXTENTS)
MAX VERTICAL LIMIT: 90M AGL

EIKN CTR

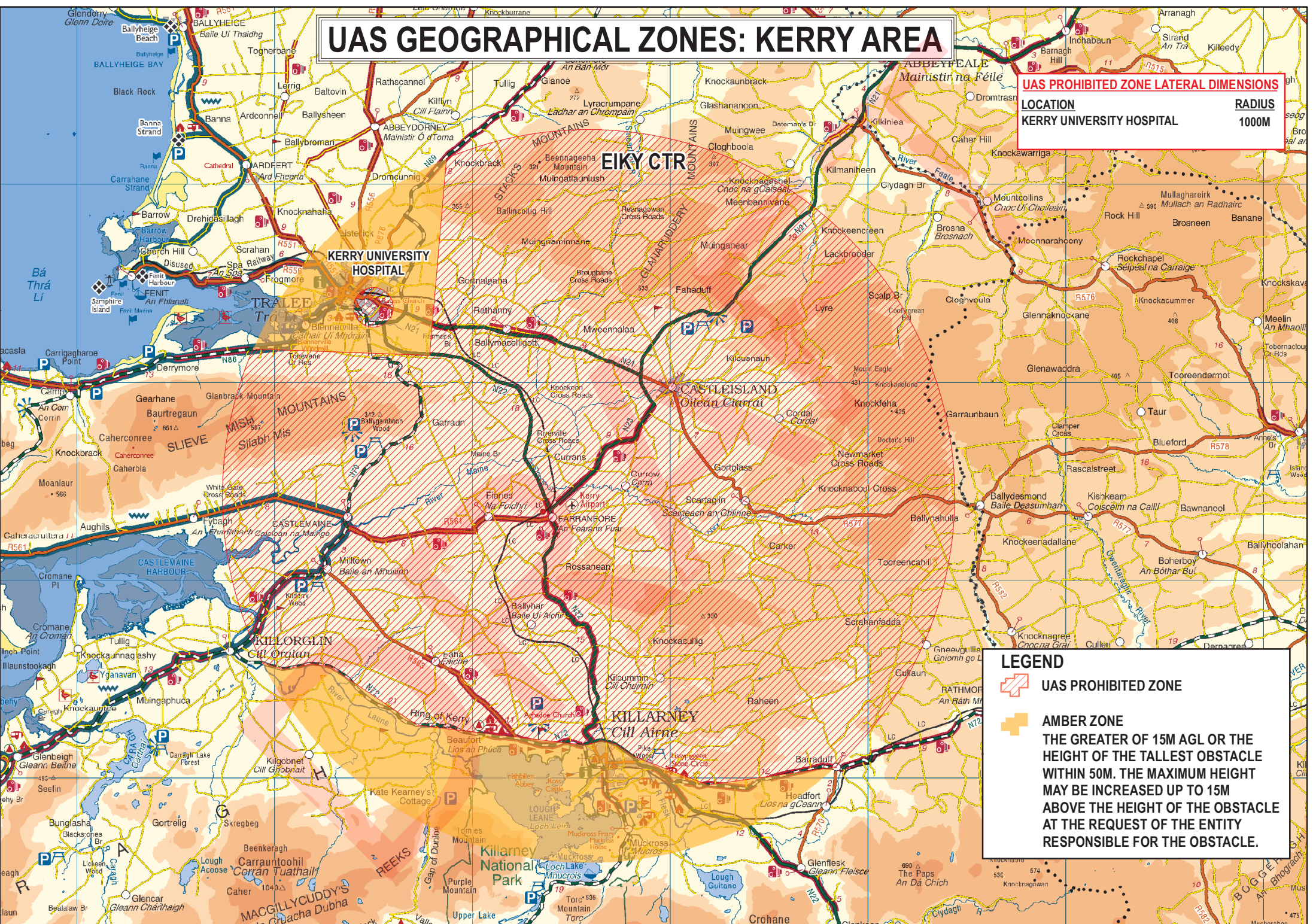
CONNAUGHT AIRPORT

CASTLEREA PRISON



UAS GEOGRAPHICAL ZONES: KERRY AREA

UAS PROHIBITED ZONE LATERAL DIMENSIONS

LOCATION	RADIUS
KERRY UNIVERSITY HOSPITAL	1000M



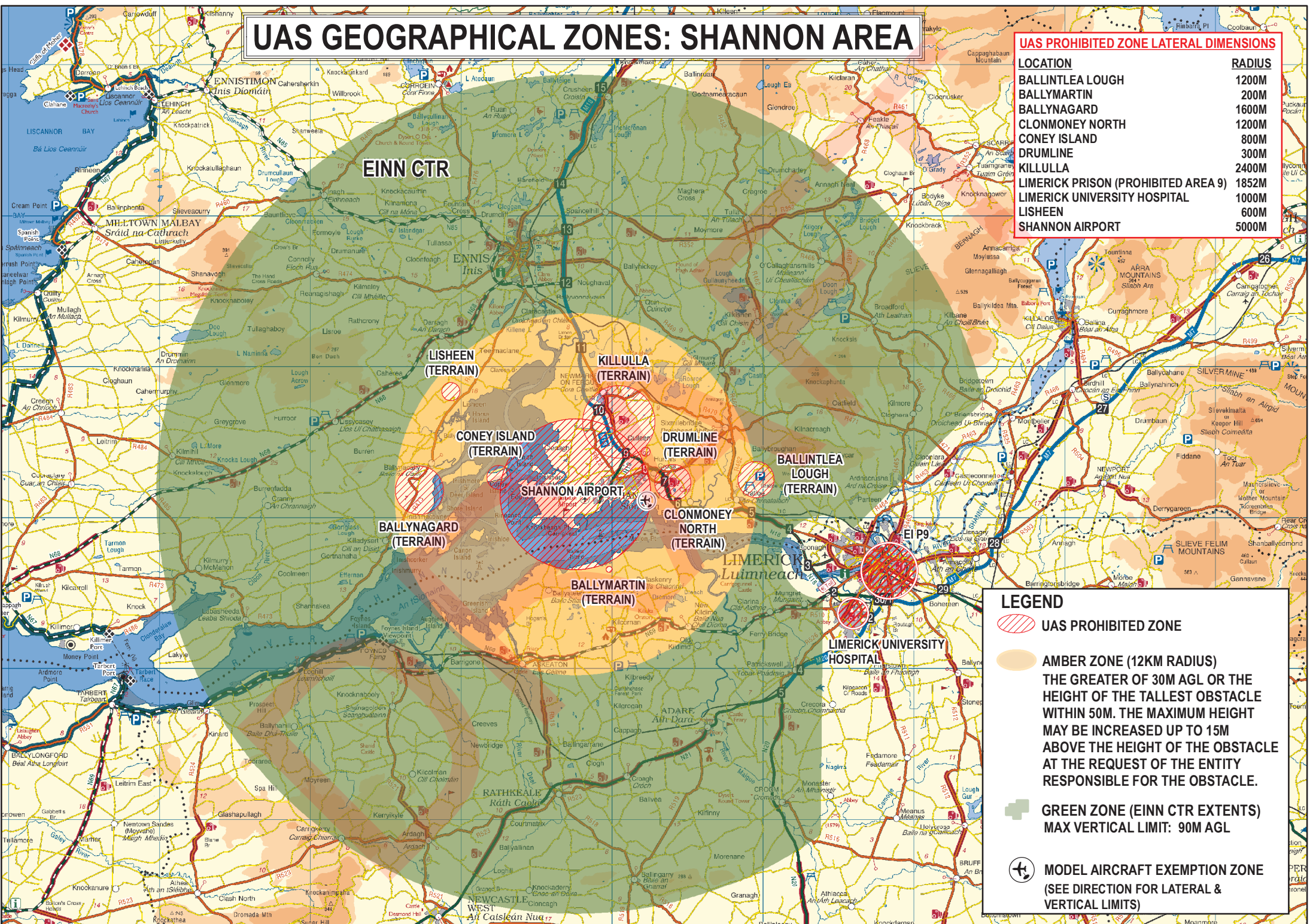
LEGEND

-  UAS PROHIBITED ZONE
 -  AMBER ZONE
- THE GREATER OF 15M AGL OR THE HEIGHT OF THE TALLEST OBSTACLE WITHIN 50M. THE MAXIMUM HEIGHT MAY BE INCREASED UP TO 15M ABOVE THE HEIGHT OF THE OBSTACLE AT THE REQUEST OF THE ENTITY RESPONSIBLE FOR THE OBSTACLE.





UAS GEOGRAPHICAL ZONES: SHANNON AREA

UAS PROHIBITED ZONE LATERAL DIMENSIONS

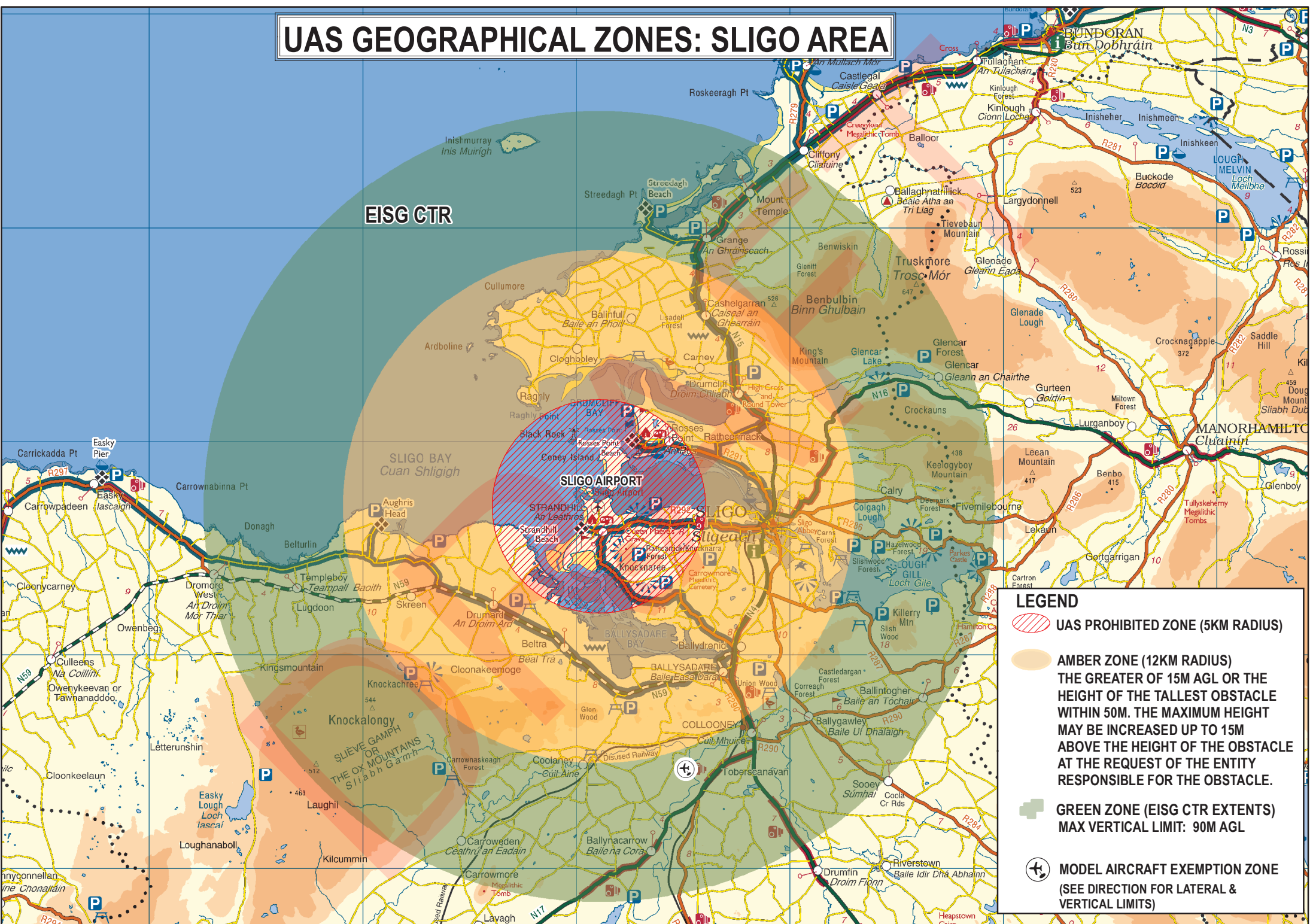
LOCATION	RADIUS
BALLINTLEA LOUGH	1200M
BALLYMARTIN	200M
BALLYNAGARD	1600M
CLONMONEY NORTH	1200M
CONEY ISLAND	800M
DRUMLINE	300M
KILLULLA	2400M
LIMERICK PRISON (PROHIBITED AREA 9)	1852M
LIMERICK UNIVERSITY HOSPITAL	1000M
LISHEEN	600M
SHANNON AIRPORT	5000M



LEGEND

-  UAS PROHIBITED ZONE
-  AMBER ZONE (12KM RADIUS)
THE GREATER OF 30M AGL OR THE HEIGHT OF THE TALLEST OBSTACLE WITHIN 50M. THE MAXIMUM HEIGHT MAY BE INCREASED UP TO 15M ABOVE THE HEIGHT OF THE OBSTACLE AT THE REQUEST OF THE ENTITY RESPONSIBLE FOR THE OBSTACLE.
-  GREEN ZONE (EINN CTR EXTENTS)
MAX VERTICAL LIMIT: 90M AGL
-  MODEL AIRCRAFT EXEMPTION ZONE
(SEE DIRECTION FOR LATERAL & VERTICAL LIMITS)

UAS GEOGRAPHICAL ZONES: SLIGO AREA



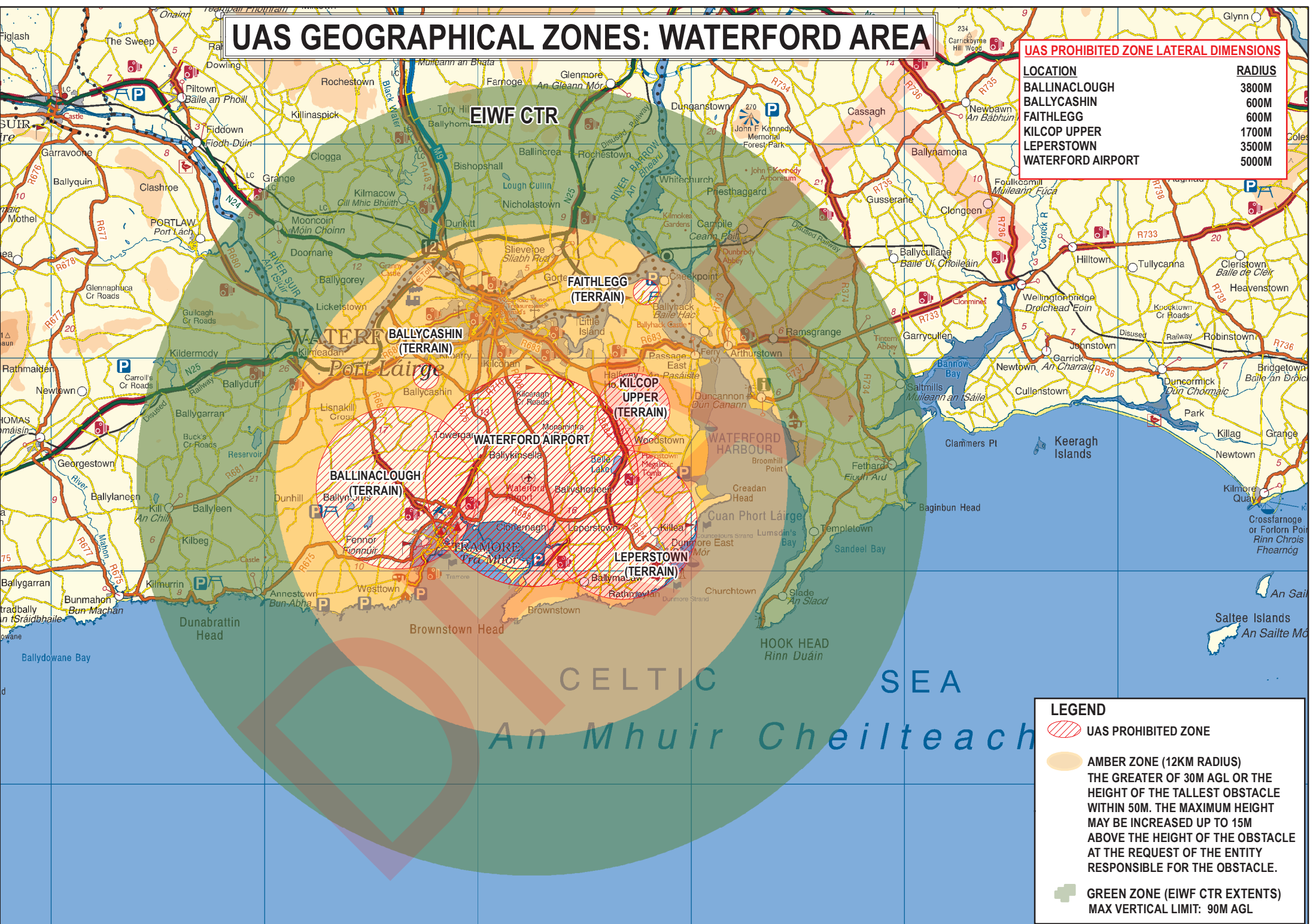
LEGEND

- UAS PROHIBITED ZONE (5KM RADIUS)
- AMBER ZONE (12KM RADIUS)
THE GREATER OF 15M AGL OR THE HEIGHT OF THE TALLEST OBSTACLE WITHIN 50M. THE MAXIMUM HEIGHT MAY BE INCREASED UP TO 15M ABOVE THE HEIGHT OF THE OBSTACLE AT THE REQUEST OF THE ENTITY RESPONSIBLE FOR THE OBSTACLE.
- GREEN ZONE (EISG CTR EXTENTS)
MAX VERTICAL LIMIT: 90M AGL
- MODEL AIRCRAFT EXEMPTION ZONE
(SEE DIRECTION FOR LATERAL & VERTICAL LIMITS)




UAS GEOGRAPHICAL ZONES: WATERFORD AREA

UAS PROHIBITED ZONE LATERAL DIMENSIONS

LOCATION	RADIUS
BALLINACLUGH	3800M
BALLYCASHIN	600M
FAITHLEGG	600M
KILCOP UPPER	1700M
LEPERSTOWN	3500M
WATERFORD AIRPORT	5000M



LEGEND

-  UAS PROHIBITED ZONE
-  AMBER ZONE (12KM RADIUS)
THE GREATER OF 30M AGL OR THE HEIGHT OF THE TALLEST OBSTACLE WITHIN 50M. THE MAXIMUM HEIGHT MAY BE INCREASED UP TO 15M ABOVE THE HEIGHT OF THE OBSTACLE AT THE REQUEST OF THE ENTITY RESPONSIBLE FOR THE OBSTACLE.
-  GREEN ZONE (EIWF CTR EXTENTS)
MAX VERTICAL LIMIT: 90M AGL